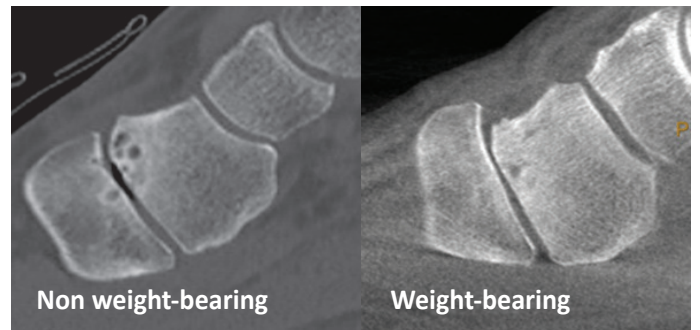


Weight Bearing CT – 3D Imaging for the Foot & Ankle

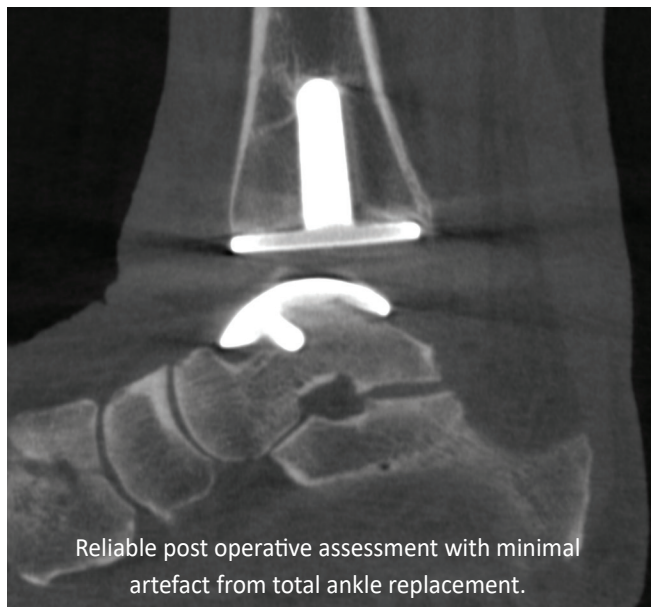
**A first in South Australia for Foot & Ankle Imaging.
Available at our St Andrew's Hospital Clinic.**

Enhanced diagnostic capacity for a wide spectrum of clinical conditions which are best demonstrated with weight bearing imaging, including **Lisfranc** fractures and dislocations, tibiofibular **syndesmosis** and hindfoot **instability**.

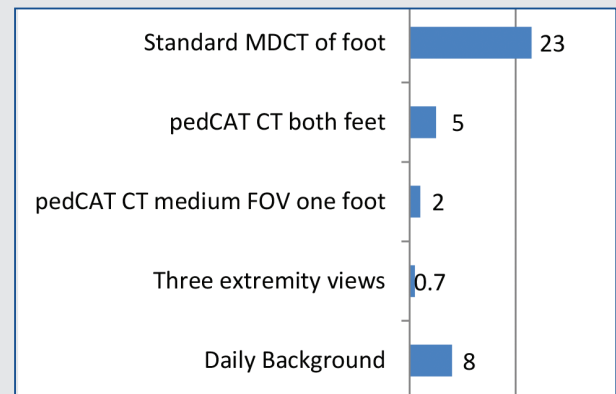
- + Weight bearing stability and dynamics are now possible with 3D CT.
- + Patients can be standing or sitting; one foot or both feet; the whole foot, forefoot, midfoot or hindfoot.
- + Imaging can also be obtained in shoes, braces or orthotics.
- + Artefacts from screws and joint replacements are low.
- + A 0.3mm volumetric data set provides high quality bone and joint detail with x-ray exposure less than a single day's background environmental radiation.



Dynamic naviculo-cuneiform subluxation demonstrated by WBCT but not routine CT or weight-bearing x-rays.



Reliable post operative assessment with minimal artefact from total ankle replacement.



Ludlow IJDI 2014. Doses in microSv.

Enquiries and Bookings:

St Andrew's Hospital clinic
1800 835 665

If you have any further questions about this new weight bearing CT service and how it may benefit your patients please contact us.